



March 2008

Contract price softens in March ▶

Spot price softens in March ▶

Methodology

Prior to 2008, the price index relied on the mode, or 'typical', price from our price discovery surveys for both spot and contract prices. The March 2008 reference spot price is based on average spot price offered and signed from February through mid-March. The March 2008 reference contract price reports the average levelized price of the contracts signed and offered from April through mid-March for 2010 delivery.

Notes on prices

Reference prices represent aggregated price information from numerous sources. Price ranges are approximations. Reference price and price ranges are as close to accurate as possible without revealing source-specific information.

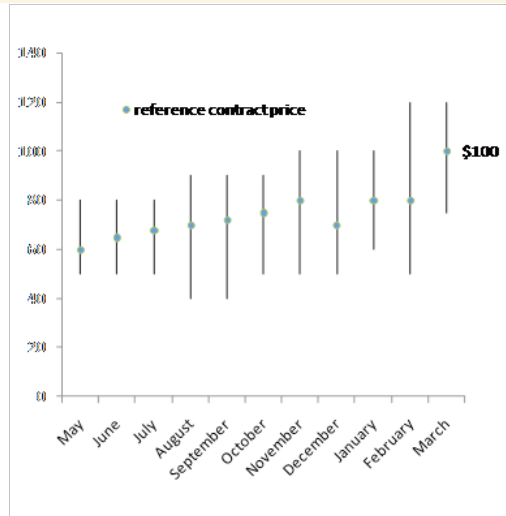
MARCH 2008:

Prices Softening

Contract prices:

- Reference contract price in March: \$100/kg
- 25% increase in reference contract price over February
- Contract range wider in March over February

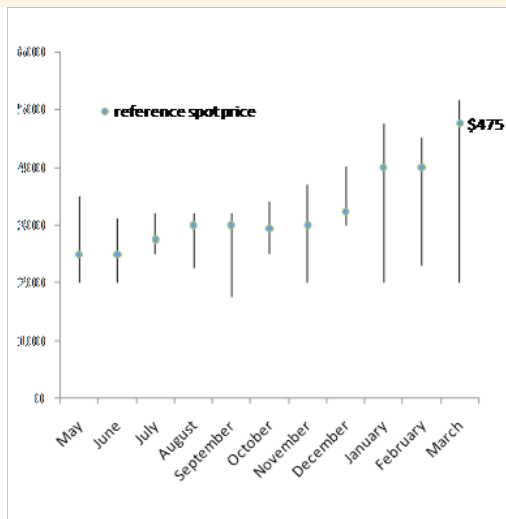
Contract Price



Spot prices:

- Reference spot price in March: \$475
- 19% increase in reference spot price over February
- Spot range wider in March over February

Contract Price



More Information

For more information on the Silicon Price Index including subscription information and methodology please visit: <http://www.siliconpriceindex.com/>

Disclaimer

© Rogol Energy Consulting, LLC 2008.
Neither this publication nor any portion hereof may be reprinted, sold or otherwise redistributed without written consent. The information, opinions and estimates herein are not directed at, or intended for distribution to or use by, any person or entity in any jurisdiction where doing so would be contrary to law or regulation which would subject Rogol Energy Consulting, LLC ('RE Consulting') to any additional registration or licensing requirement within such jurisdiction. The information and statistical data herein have been obtained from sources we believe to be reliable. Such information has not been independently verified and we make no representations or warranty as to its accuracy, completeness or correctness. Any opinions or estimates herein reflect the judgement of RE Consulting at the date of publication and are subject to change at any time without notice. This is not a solicitation of any offer to buy or sell. This publication is for information purposes only and is not intended to provide professional, investment or any other type of advice or recommendation. RE Consulting does not accept any responsibility and can not be held liable for any person's use or reliance on the information and opinions contained herein.